



**Global Leader in High Security Information  
End-of-Life Solutions for Over 50 Years**

## **Operation and Maintenance Manual**

### **SEM Model F071, F034, and F112**

**Model F034 & F112**



**Model F071**



**MAN-024 | Created 2/20/20 | ECN: 00506**

For service, parts, and customer support, contact us:

**SECURITY ENGINEERED MACHINERY**

5 Walkup Drive • Westborough, MA 01581

[service@semshred.com](mailto:service@semshred.com)

[www.semshred.com](http://www.semshred.com)

1-508-366-1488

## Table of Contents

<b>Operation and Maintenance Manual</b> .....	<b>1</b>
<b>SEM Model F071, F034, and F112</b> .....	<b>1</b>
<b>Safety Procedures</b> .....	<b>3</b>
<b>Introduction to the Model F-034 Fan System</b> .....	<b>4</b>
<b>Purpose</b> .....	<b>4</b>
<b>How it works</b> .....	<b>4</b>
<b>Equipment Supplied</b> .....	<b>4</b>
<b>Specifications</b> .....	<b>4</b>
<b>Options/Spare Parts</b> .....	<b>5</b>
<b>Installation Instruction</b> .....	<b>5</b>
<b>Set Up</b> .....	<b>6</b>
<b>Operation</b> .....	<b>6</b>
<b>Maintenance</b> .....	<b>6</b>

## Safety Procedures

Your new SEM disintegrator incorporates powerful, heavy duty cutting mechanisms. **Serious injury may result** if proper precautions are not followed.



This equipment should never be operated by children or individuals that are incapable of understanding these safety precautions.

Do not reach into the feed opening for any reason. Never insert fingers, hands, or objects not meant to be shredded into the feed opening.

Do not operate this equipment with long hair, a necktie, loose clothing, or jewelry, as there is risk they may be pulled into the shredder.



Maintenance or repair of this equipment should be performed only by trained, authorized service personnel.

Always disconnect electrical power (unplug) before removing or opening the cover or other panels providing access to internal mechanisms.



Under no circumstances should any items made of or containing heavy metal pieces be inserted into the unit. Permanent damage to the cutting head may result.

## Introduction to the Model F-034 Fan System

### *Purpose*

The new Model F-Series Fan system is a heavy-duty waste evacuation system that improves and substantially increases the evacuation of waste particles from SEM disintegrators. It provides a cleaner and more efficient operation and reduces overall sound levels as compared to industrial heads.

### *How it works*

Disintegrated waste is air conveyed from the disintegrator to the fan discharge, depositing the waste into two separate plastic waste bags. The plastic bags are simply mounted on round adapters and clamped into place. The suspended bags allow the machine operator to visually check the waste accumulation. The full bags of waste are easily removed for disposal.

### *Equipment Supplied*

- 1 – Fan-type evacuation unity
- 1 – Floor stand support frame or enclosure mount bracket
- 1 – Dust filter bag #2DB
- 1 – Manual starter control with overload motor protection
- 1 – Lot of flex-hose, adapter, ductwork, and fasteners

### *Specifications*

#### **F071/F034**

Motor: ¾ HP, 3600 RPM

Inlet Size: 4", 5"

F071 Size: 90 ¾" High, 72" Wide, 30" Deep

F034 Size: 101" High, 87" Wide, 30" Deep

Electrical:

Power (V/Ph/Hz)	Current Draw
120/1/60	9.6 Amps
230/1/60	4.8 Amps
220/1/50	5 Amps

#### **F112**

Motor: 1 ½ HP, 3600 RPM

Inlet Size: 5", 6"

F112 Size: 101" High, 54" Wide, 30" Deep

Electrical:

Power (V/Ph/Hz)	Current Draw
208/3/60	6.6 Amps
230/3/60	6 Amps
460/3/60	3 Amps
220/3/50	6 Amps
380-415/3/50	3.3 Amps

### *Options/Spare Parts*

F071, F034 Replacement Bottomless Filter Bag: 527FILTBGBOT

F112 Replacement Bottomless Filter Bag: 751FB3SC

Case of Bags (50): 755BAG3MILA

### *Installation Instructions*

**Note:** Prior to assembly, uncrate all parts and become familiar with each sub-assembly with reference to the attached assembly print.

- Position the floor stand support frame next to the disintegrator to suit the room size and for easy access to the equipment. Enclosure bracket hangs over right side wall of enclosure, screw in place.
- Mount the motor/fan unit on top of the support frame.
- Mount the two tubular duct support rods to the floor stand frame with fasteners provided.
- Connect the ductwork provided to the top of the fan outlet. Fasten support rods to duct clamp adapter.  
**Note:** It is recommended that the elbow be fastened to the fan outlet with sheet metal screws or rivets. Use the duct tape supplied to seal all seams for a dust tight operation.
- Connect dust filter bag to the duct adapter. Clamp in place.
- Mount the Y-Adapter to underside of the fan unit as shown, using the fasteners provided.  
**Note:** Two clamp rings should be on adapters.
- Connect one end of the flex-hose to the fan-inlet, using the hose clamp provided. Connect the other end of the flex-hose to the transition on the disintegrator, using the hose clamp provided. If a sound enclosure is used with the disintegrator, use the sleeve adapter provided to facilitate this connection.
- Mount the start/stop switch supplied, onto either a wall or the fan unit near the motor. Run proper wiring to switch and motor to suit your state and electrical codes. If purchased, wire motor to control panel. Must be done a licensed electrician.  
**Note:** A wiring diagram is provided in the switch enclosure.

You are now ready to operate!

## Set Up

Before operating, mount two plastic waste collection bags (Part #755BAG3MILA) on the round adapters provided. The F071 will only have one bag. Hooks are provided on the framework of the floor stand, so the bag clamping rings are free from the perimeter of the adapters. Bags are simply slipped onto the adapters. Allow 4-5 inches of overlap of the top of the bag. Slip clamping rings over bag and onto adapter. Pull excess bag material down over rings. Bags should be touching floor.

## Operation

You are now ready to start collecting waste particles into the suspended bags.

- Turn the fan system on.
- Start disintegrator per the operating instructions supplied with it.
- Feed material to be destroyed into disintegrator at the recommended feed rates.
- When bags are full, shut off air system to remove, and install new ones.

**Note:** A handle is provided on the Y-Adapter. This adjustable damper will allow you to set the waste distribution evenly into the two bags. When material pyramids up near the top, shake the bag to allow more room for collection of waste.

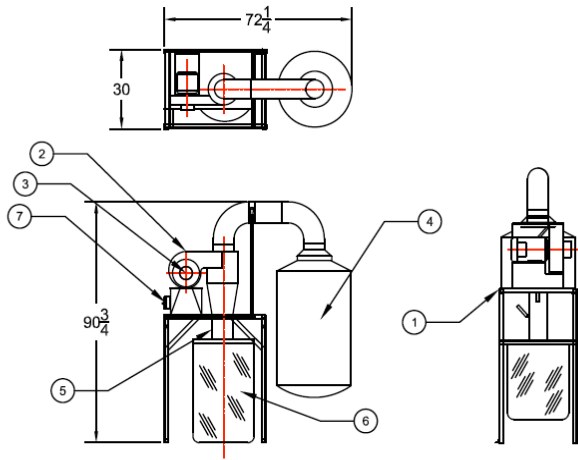
## Maintenance

- Prior to each daily operation, shake filter bag by hand to allow loose dust to settle at the bottom (air must be off).
- Periodically remove filter and empty.
- Lubricate motor bearings yearly.

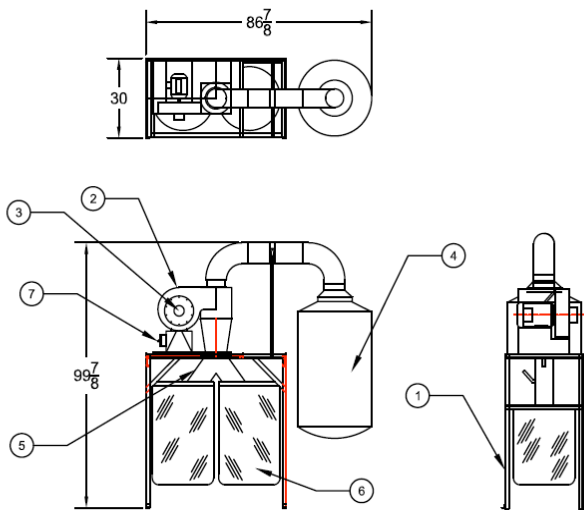
**Note:** On new systems, especially those with small particle size, a fine dust may appear in the atmosphere during the first hour or two of operation. This will vanish as soon as the filter has a coat of dust on the inner bag surfaces, which filters in the air.

Should you need assistance to this equipment, please call SEM's customer service department.

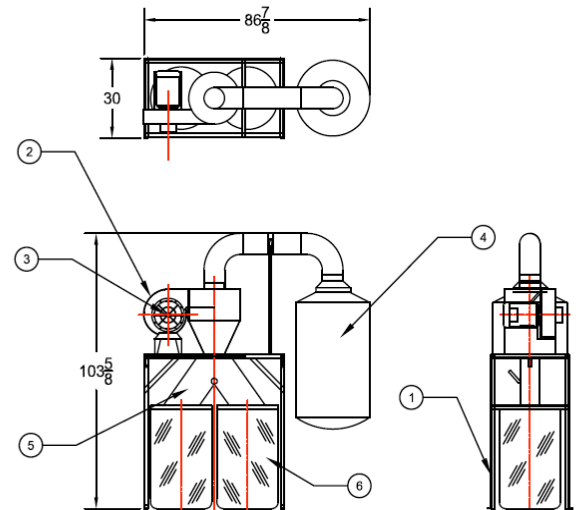
F071 - 3/4 HP



PARTS	
1	FRAME
2	FAN
3	FAN INLET
4	FILTER BAG - OPTIONAL
5	Y-ADAPTER/BAG ADAPTER
6	WASTE BAG
7	STARTER



F034 - 3/4 HP



F112 - 3/4 HP



**Global Leader in High Security Information  
End-of-Life Solutions for Over 50 Years**

For service, parts, and customer support, contact us:

**SECURITY ENGINEERED MACHINERY**

5 Walkup Drive • Westborough, MA 01581

service@semshred.com


1-508-366-1488

[www.semshred.com](http://www.semshred.com)

**Follow us on social media:**

 **Facebook:** <https://www.facebook.com/semshred>

 **Twitter:** <https://twitter.com/semsecure>

 **LinkedIn:** <https://www.linkedin.com/company/security-engineered-machinery>

 **Youtube:** <https://www.youtube.com/user/datadestruction>



