

0101

Level H-3 Hard Drive Crusher

Listed on NSA/CSS EPL for HDD Destruction



Global Leader in High Security Information
End-of-Life Solutions for Over 50 Years

Specifications:

Media Accepted	Rotational HDDs with caddies and/or rails included
Cycle Capacity	One (1) standard HDD or four (4) laptop drives
Hourly Throughput	Up to 204 drives (NSA rated) Up to 450 3.5 in. laptop drives Up to 2,250 2.5 in. laptop drives
Feed Opening	1.85 in. x 5.625 in. z 19 in.
Dimensions (HxWxD) Weight	22 in. x 10 in. x 19 in. 115 lbs.
Electrical	115V-60Hz International voltage available
Power	0.33HP
Certifications	CE optional
Warranty	1 year non-parts/90 days labor

Standard Features:

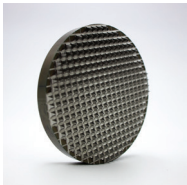
- Destroys all hard drives regardless of size, format, or type up to 1.85 in. thick
- Safety interlocks prevent the unit from operating with the door open
- Made in the USA — TAA compliant
- #1 selling NSA listed HDD crusher on the market
- **Drives mounted in caddies used in most rack mount server environments can be crushed without having to remove them from the caddies ***
- Can destroy glass hard drives safely with optional glass drive anvil*
- 204 cycles/hr. - fastest cycle time in its category*
- Hydraulic mechanism is much more rugged and long lasting than the electric motor drives used in other devices*
- Delivers 12,000 pounds of force via a conical punch, causing catastrophic trauma by bending and boring a hole through the drive while also destroying the data holding platters*

*Unique to SEM

Options and Accessories:

- Spare anvil
- Heavy duty stand
- Dust cover
- Deployment case
- Mobile cart
- Shelf insert for laptop enterprise drives in caddies
- International voltage
- At-site set-up, installation, training
- Preventive maintenance contract
- Extended warranty

0101-SSDKIT



SSD anvil with wear and press plates that are factory installed to destroy SSD data storage controller boards. Kit includes SSD anvil, wear plate and press plate. Must be ordered at time of purchase, no retrofitting available. Weight: 120 lbs.

