

TECH 22.HDD

SECURITY ENGINEERED MACHINERY



System comes complete with custom sound enclosure constructed of metal panels with high density insulation to meet STC-40 Standards.

42" high feed conveyor is at a comfortable working height. Up to 10 drives can be preloaded for automatic feeding. Mounted controls make operation simple.

Security screens, discharge transition and collection bin are constructed of stainless steel to prevent drive magnets from adhering to surfaces.



Technical Data Sheet

Hard Drive Destruction

Model: 22 HDD™

The Model 22 HDD™ provides the ultimate in secure disposal of obsolete hard drives. This unique self-contained system literally shreds drives into unreconstructible fragments. There is no chance of reconstruction and therefore absolutely no possibility of data theft.

The system has everything you need to begin destroying hard drives quickly, easily and safely. The unit's specially designed feed hopper is equipped with a built-in conveyor that automatically feeds the drives into the destruction chamber. A unique sensing and indexing feature assures drives feed as quickly as possible, but will not allow overfeeding to prevent jamming.

Drives up to 3½" are destroyed at a rate of 20/hour. The Model 22 HDD is also ideal for hand held electronic devices and other multimedia including computer backup tapes.



Specifications

Capacity: 20 Drives Per Hour

Cutting System: 5 Bladed (3 Rotor/2 Bed)

Particle Size: ½", ¾", 1" std. (other sizes available)

Feed Opening: 12" x 9"

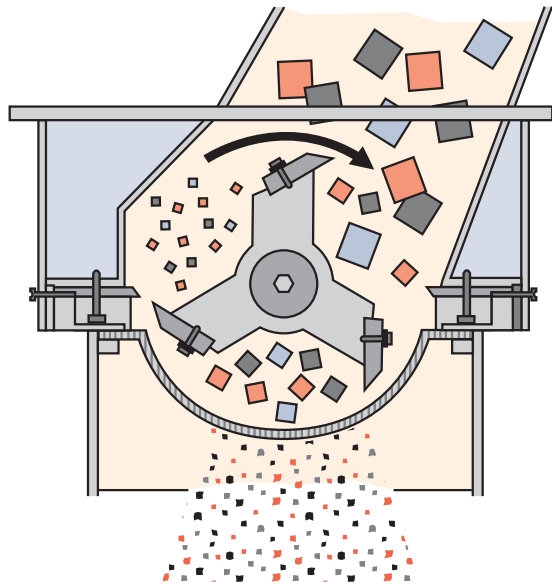
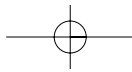
Motor: 20HP Std. - 25HP Opt. 460V/3/60
(40 Amp service recommended at 460V, other voltages available)

Weight: 3600 lbs

Dimensions: 86"H x 110½"D x 53"W

Controls: Integrated with single push button operation featuring complete safety interlocks, current sensing, automatic drive indexing and motor control.

Custom industrial solutions available for higher volumes.



How a Disintegrator Works

SEM disintegrators utilize proven rotary knife mill technology to destroy virtually any bulk material into irregularly shaped particles which cannot be reconstructed.

The cutting mechanism consists of 3 knives mounted on a solid steel rotor which pass 2 stationary bed knives. Waste is cut continuously until it is small enough to pass through a perforated steel sizing screen. Once the material passes through the screen it falls into a 2 cu. ft. stainless steel collection bin.

In addition to hard drives, some other items our disintegrators destroy include:

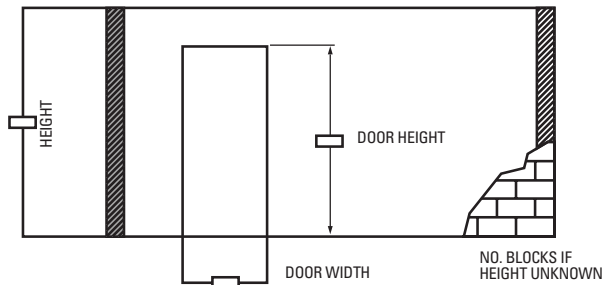
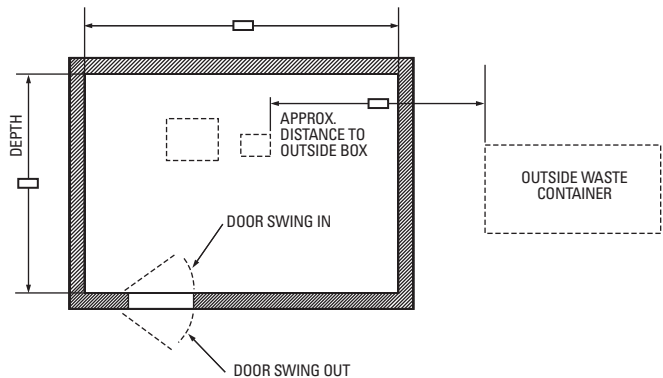
- Books & Bound Documents
- Capsules and Tablets
- Casino Chips and Dice
- Circuit Boards
- Data Cartridges and Tapes
- Plastic Bottles & Tubes
- Returned Goods
- Off-Spec/Obsolete Products
- Expired Inventory and much more.

Application Form / Site Check List

Company _____
 Address _____
 City _____ State _____ ZIP _____
 Contact _____ Title _____
 Phone: _____ FAX _____
 E-mail _____

Model _____
 Desired Throughput _____
 End Particle Size _____
 Electrical Requirements: Voltage ___ Phase ___ Cycle ___
 Noise Requirements: Dba _____
 Feed Method: Hand Conveyor Other
 Collection: Bag
 Cart/Gaylord
 Dumpster/Compactor - Size _____

Application Information New Upgrade
 Details: _____



Location of Power Supply _____
 Site Voltage _____
 Loading Dock Fork Truck Available
 Access to Location
 Hallway Size _____ Restriction _____
 Tile Floor
 Freight Elevator Capacity _____ Size _____



Security Engineered Machinery
 800.225.9293 • Fax 508.366.6814
 www.semshred.com • info@semshred.com

