

SECURITY ENGINEERED MACHINERY



The F-Series Collection System features single (standard on Premier Series) or dual plastic waste bag or drum. Each bag/drum can hold between 50 and 85 lbs. of product. The F-Series provides quieter operation, more capacity and higher efficiency



Concerned with noise? The MX provides a 15-25 dba reduction in sound levels. It surrounds the entire machine including the feed area for total noise reduction.



Technical Data Sheet

Industrial Disintegrator

Model: 1012 Series II

Features

- Five (5)blade solid rotor, producing over 3200 more cuts per minute than competitive models
- Largest feed opening in the industry 10" x 16" with 34% more open area than competitive models.
- Increased screen area, adding 15% more, providing thru put volumes up to 1350 #/hr-Service access expanded allowing for a 30% increase in work area shortening blade service time.
- Tamper proof safety limit switches with time delay for access to service areas
- Metal sound proofed casted base.

Options

- Voltages - 208V, 230V, 380V, 415V, 575V
- Bottomless filter kit #500FCBOT13
- Metal View Drum (with plexiglass window) #756MV
- Drum Dolly #757DRDOL
- Feed Rate Meter (Amperage Monitor)
- MX-12 Sound Enclosure
- 15-25DBA Noise Reduction
- Tool Kit #553TK230
- Plastic Waste Bags #755BAG 3Mil
- Hour usage meter

Recommended Spare Parts

- Spare Set of Knives 5 Rotor/2 Bed #3961012K5
- Spare Screen 3/32", 1/4", 3/8", 1/2" (specify)
- Spare V-Belts #V3VX800/5
- Plastic Waste Bags #755BAG 3Mil Enclosure

Specifications

Motor: 15 HP @ 460V/3/60Hz
(25 Amp service recommended at 460V, other voltages available)

Thru-put: Up to 450 lbs./hr DoD or
800 lbs./hr official use

Knives: 5 Rotating/2 Stationary

Feed Opening: 10" x 16" Front 10" x 16" Top

Weight: 1,300 lbs.

Dimensions: 64"H x 28 1/2"W x 42"D

Collection System: Comes standard with
F-Series Model F-13 Fan,
1/3 HP, Single Bag Collection



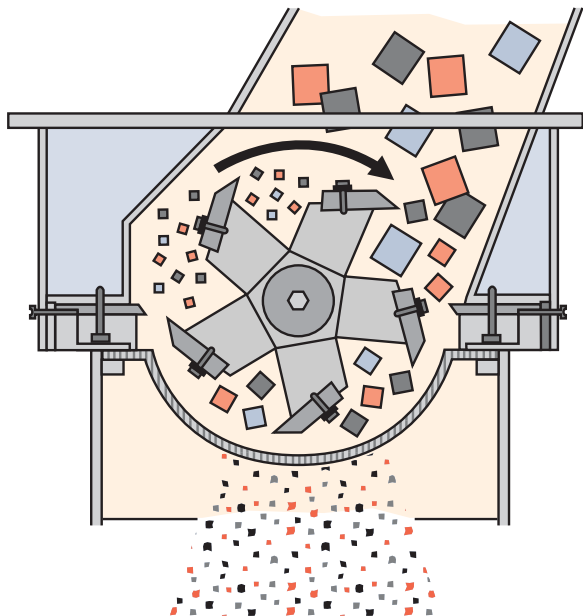
How a Disintegrator Works

SEM disintegrators utilize proven rotary knife mill technology to destroy virtually any bulk material into irregularly shaped particles which cannot be reconstructed.

The cutting mechanism consists of 5 knives mounted on a solid steel rotor which pass 2 stationary bed knives. Waste is cut continuously until it is small enough to pass through a perforated steel sizing screen. Once the material passes through the screen it is collected via an air system or collection bin.

In addition to paper, some other items our disintegrators destroy include:

- Books & Bound Documents
- Capsules and Tablets
- Casino Chips and Dice
- Circuit Boards
- Data Cartridges and Tapes
- Plastic Bottles & Tubes
- Returned Goods
- Off-Spec/Obsolete Products
- Expired Inventory and much more.
- Hard Drives

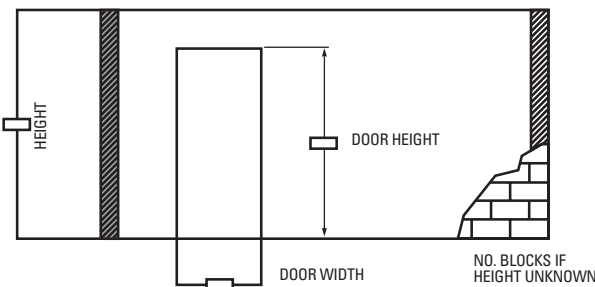
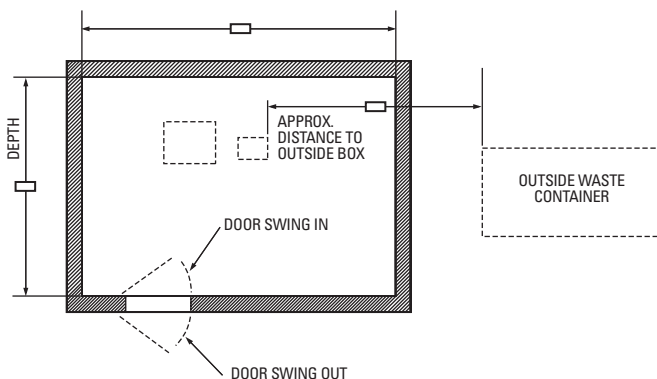


Application Form / Site Check List

Company _____
 Address _____
 City _____ State _____ ZIP _____
 Contact _____ Title _____
 Phone: _____ FAX _____
 E-mail _____

Application Information New Upgrade
 Details: _____

Model _____
 Desired Throughput _____
 End Particle Size _____
 Electrical Requirements: Voltage _____ Phase _____ Cycle _____
 Noise Requirements: Dba _____
 Feed Method: Hand Conveyor Other
 Collection: Bag
 Cart/Gaylord
 Dumpster/Compactor - Size



Location of Power Supply _____
 Site Voltage _____
 Loading Dock Fork Truck Available
 Access to Location
 Hallway Size _____ Restriction _____
 Tile Floor
 Freight Elevator Capacity _____ Size _____



Security Engineered Machinery
 800.225.9293 • Fax 508.366.6814
 www.semshred.com • info@semshred.com