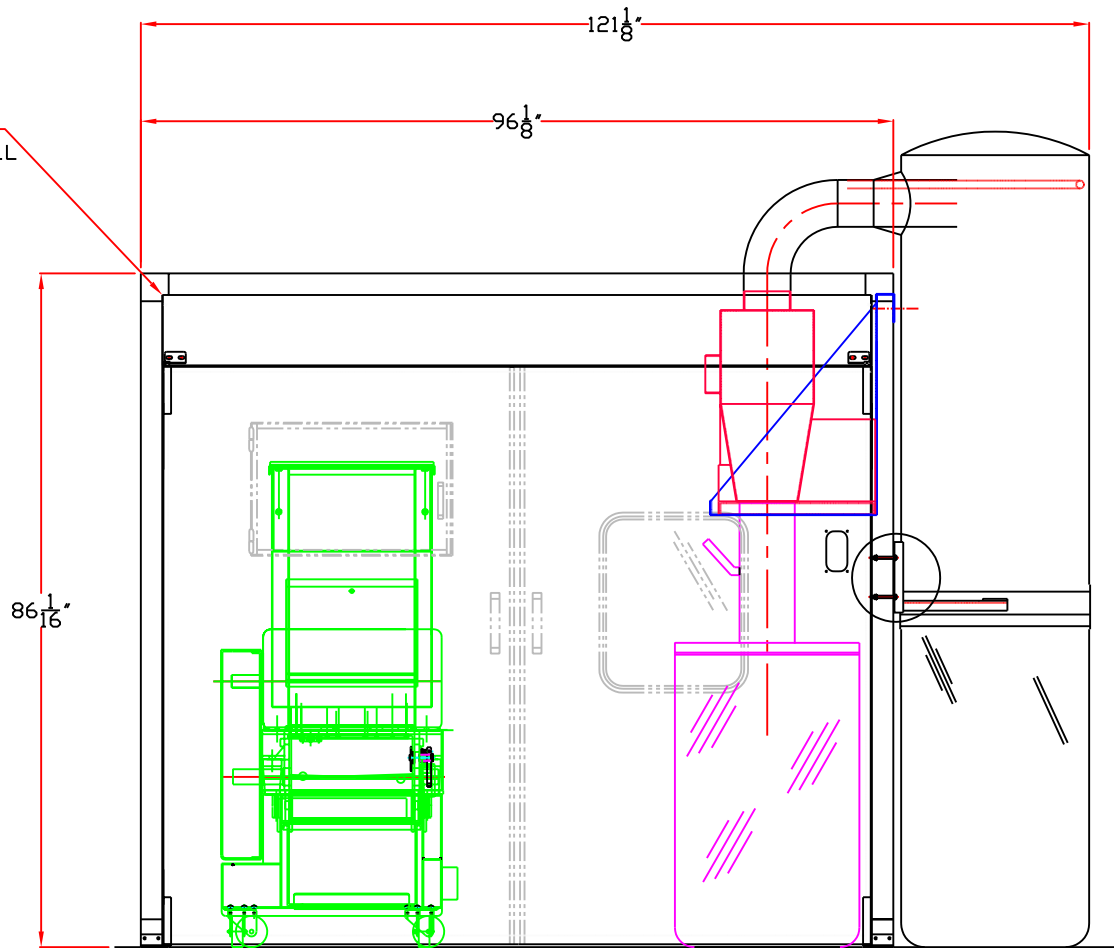


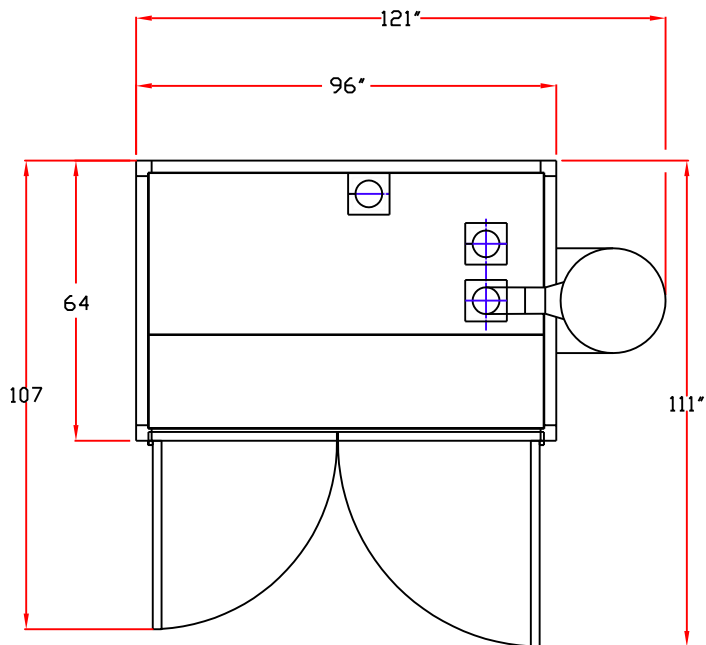
MX-ENCLOSURE  
97" x 65" x 87" TALL  
WALLS 2" THICK



MODEL 1012/5  
DISINTEGRATOR

MODEL F071B WITH  
BOTTOMLESS FILTER

**ARIAL VEIW**  
(SHOWN OUT OF SCALE)



**FRONT ELEVATION**

NOTE: RECOMMENDED ROOM SIZE (MINIMUM)  
13'-0" BY 12'-0" WITH 9'-0" CEILING HEIGHT

**NOTE**


THIS DOCUMENT CONTAINS PROPRIETARY INFORMATION DEVELOPED BY SECURITY ENGINEERED MACHINERY.

IT IS RELEASED ONLY UPON REQUEST AND APPROVAL OF THE MANAGEMENT OF SEM ENGINEERING AND IS FOR REFERRAL USE ONLY.

THIS DOCUMENT SHOULD NOT BE REPRODUCED OR INFORMATION WITHIN DISCLOSED UNLESS APPROVED BY SEM.

(XX)

CAD NO.

TITLE MODEL 1012/5 VALUE KIT			
CUSTOMER REFERENCE		SECURITY ENGINEERED MACHINERY 5 WALKUP DRIVE WESTBORO, MA 01581	
DATE 10/07	DRAWING NUMBER 16-7693	DATE	
DRAWN BY TRAVIS	CHECKED	DATE	SCALE
SHEET		OF	
1		1	