

SECURITY ENGINEERED MACHINERY  
OPERATION, MAINTENANCE AND SERVICE MANUAL

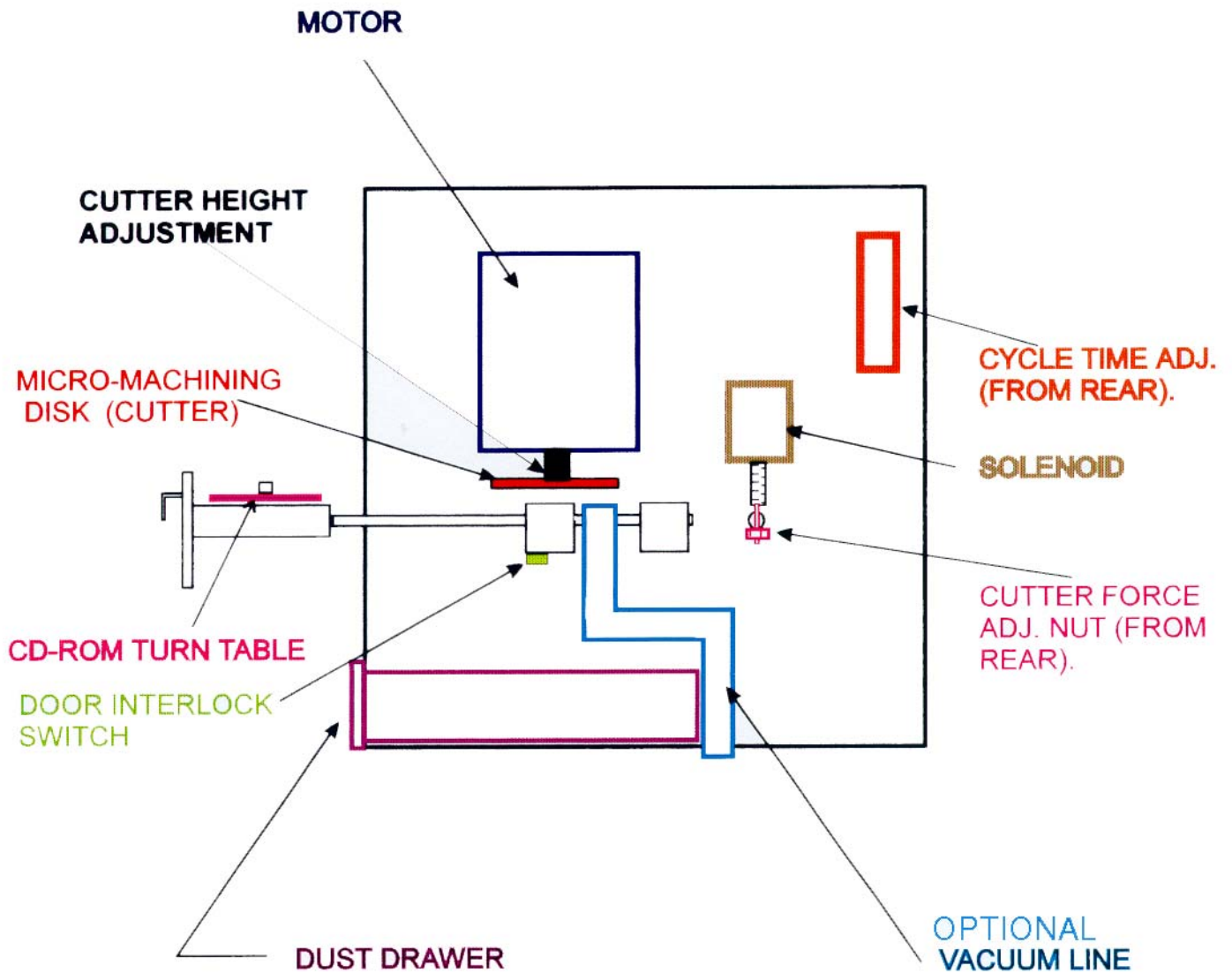
SEM MODEL 1200 CD-ROM DECLASSIFIER



## INDEX

Index.....	1
General Assembly Drawings.....	2/2A
Operation.....	3
Trouble Shooting.....	4
Adjustments.....	5
Schematic Drawing.....	6
Wiring Diagram.....	7
Vacuum Instructions.....	8/9

# MODEL 1200 GENERAL ASSEMBLY



GENERAL ASSEMBLY DRAWING

## **OPERATION**

### **LOCATION:**

The Model 1200 may be located within 6" of a facing wall, preferably a wall with a dedicated 20 amp outlet. A 15 amp Linecord is provided, and should not be replaced with a lesser rating.

### **OPERATION:**

The Model 1200 is designed to completely remove the CD-ROM information-bearing surface below the label area (to about the top 2.0 mm. below the label surface and produce particle sizes (dust) of less than 0.25 mm.

Operating the 1200 is simple. First, open CD access door, place CD on turntable (information side up) and close the door. With the power switch "ON", momentarily push the "RUN" switch. This starts the timed machining cycle which is normally set at 12-15 seconds. Only one CD-ROM should be on the turntable during any cycle. Insertion of more than one or none, may impair the precision cutter.

While the 1200 is operating, the CD access door is interlocked and cannot be opened.

Upon completion of the machining cycle, the amber "RUN" light will extinguish, signaling the CD declassification is completed. Simply reopen the access door and remove the declassified CD.

If a CD is encountered that does not clear within the first declassification cycle, it may be cycled a second time. If the second time does not produce complete removal of information-bearing surface, see "Adjustments", page 5.

Below the CD access door, a slide out dust collection tray is located. When necessary (after approx. 500-800 CDs have been run), loosen the two retaining thumbnuts, remove and empty the tray. Replace the tray noting that the dust seals on the tray are compressed slightly.

When the 1200 is used with the optional automatic vacuum system, emptying the dust collection tray is not necessary.

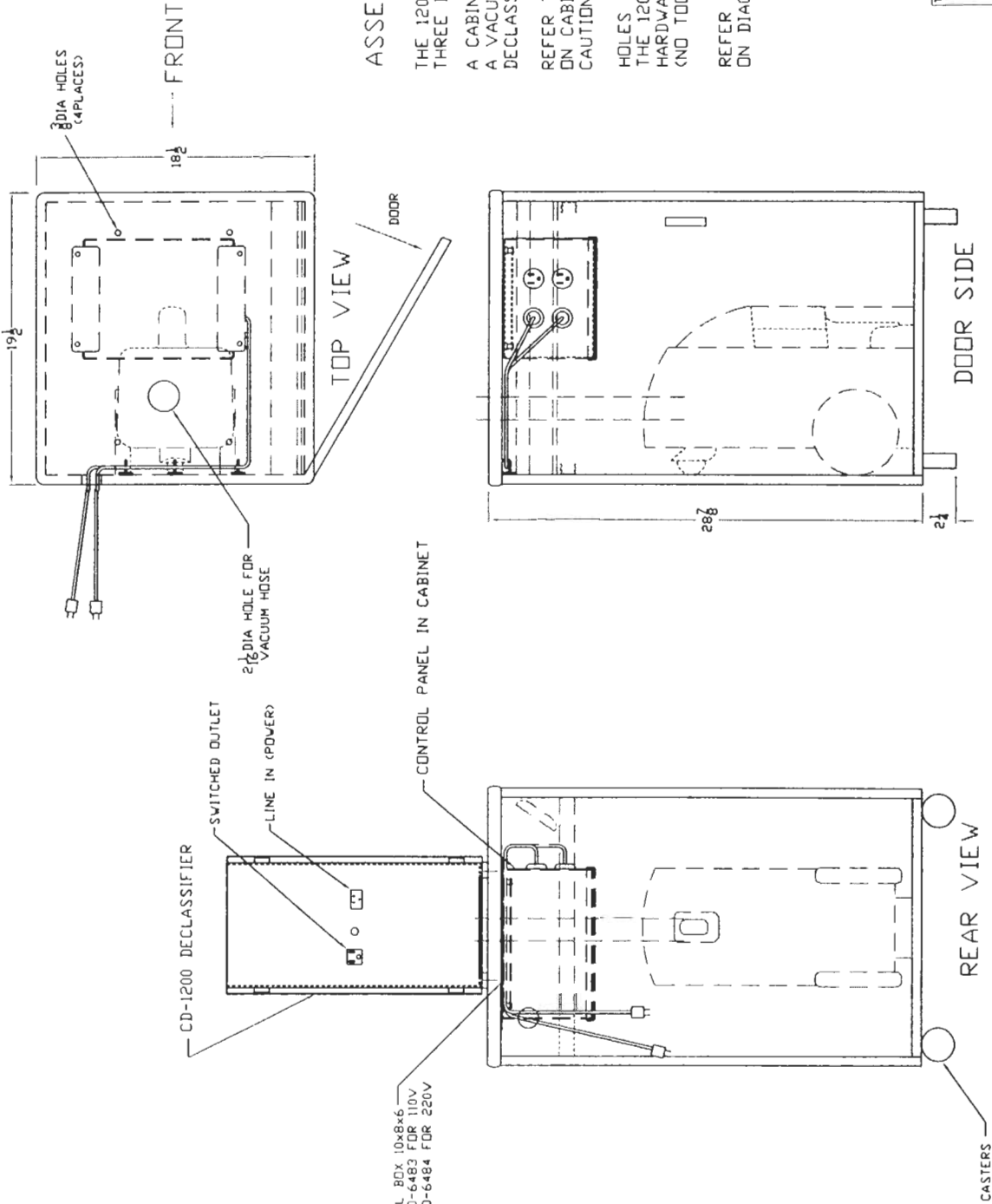
### **LUBRICATION:**

All active parts on the 1200 are lubricated for life.

### **WARNING:**

Adhesive labels must be removed prior to defacing. Labels adhesive will adhere to cutter disc, which will prevent declassification.

REV	REVISIONS	DATE & UNIT	ITEM NO.	DESCRIPTION
-----	-----------	-------------	----------	-------------



**ASSEMBLY INSTRUCTIONS:**

THE 1200-CD SYSTEM IS COMPRISED OF THREE BASIC UNITS;

A CABINET WITH CONTROL BOX ATTACHED, A VACUUM UNIT AND THE 1200-CD DECLASSIFIER.

REFER TO THE UNPACKING LIST SUPPLIED ON CABINET OR IN THE O&M MANUAL. CAUTION: CABINET TOP IS A LOOSE ITEM!

HOLES ARE PRE-DRILLED FOR MOUNTING THE 1200-CD UNIT TO CABINET AND ALL HARDWARE IS PROVIDED FOR EASY MTG. (NO TOOLS REQUIRED)

REFER TO ELECTRICAL CORD CONNECTIONS ON DIAGRAMS IN MANUAL.

TITLE	CD-1200 ASSEMBLY WITH VAC CABINET	SECURITY ENGINEERED MACHINERY
CUSTOMER REFERENCE	DATE	DRAWING NUMBER
DRAWN BY	12-7124	WESTBORO, MA
CHECKED	DATE	SHEET
12-7124	OF	

CONTROL BOX 10x8x6  
 DWG No 40-6483 FOR 110V  
 DWG No 40-6484 FOR 220V

## **TROUBLE SHOOTING**

The Model 1200 is designed for minimum maintenance and adjustments. If a problem should occur, a minor adjustment may be in order.

The Model 1200 has been shipped complete, tested, and is operational when received.

### **NO POWER:**

- A. If the unit does not operate when power switch is "ON", check power cord insertion, and check power wall outlet with another appliance or voltmeter to confirm that AC line voltage is present.
- B. If line voltage is present, unplug line cord and remove the 15 Amp. Slo-Blo fuse on the rear panel. Check the fuse with a continuity meter (ohm meter), or by replacing it.
- C. If power is present and fuse checks O.K. , unplug line cord, remove top cover screws (6) with hex head driver. With cover removed, look for Quick-Disconnect tabs on wiring/cabling or components that may have become disconnected.

### **CD-ACCESS DOOR DOES NOT CLOSE:**

- D. With line cord unplugged from wall outlet , check for obstruction on turntable . Remove obstruction.

## ADJUSTMENTS

Two main adjustments control the Model 1200 performance.

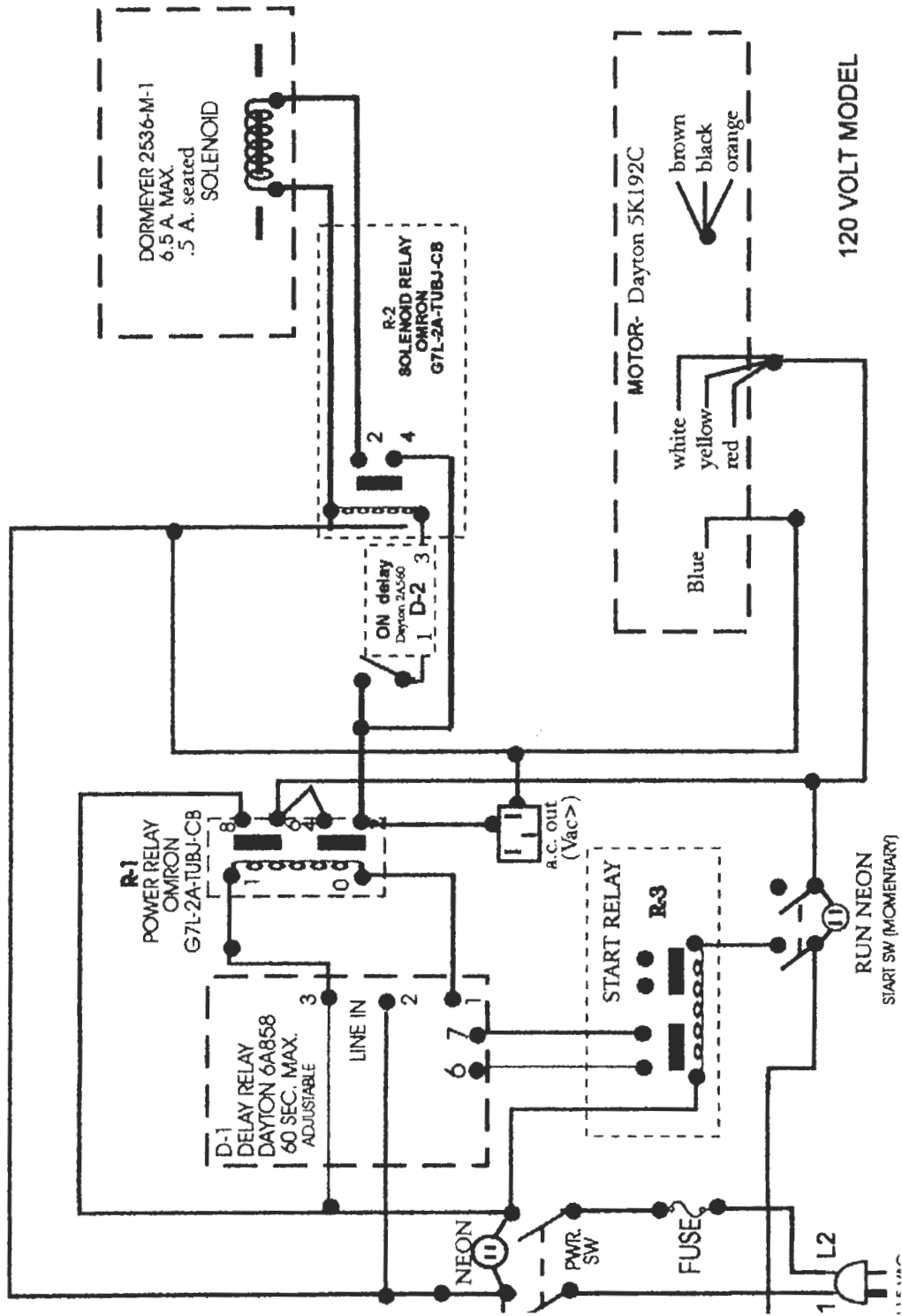
### TURNTABLE CUTTER FORCE ADJUSTMENT:

- A. REMOVE POWER CORD FROM UNIT.  
Remove rear panel (four hex-head button machine screws), and place panel along the side of the 1200 unit. The internal cable attached to the rear panel has sufficient length, and need not be disconnected.
- B. Locate the cutter force adjustment nut connected to the vertical tension rod. (See page 2, general assembly drawing.)  
Remove CD access door, (two 14-20 hex button head screws), and front panel (four 10-32 hex head Button screws) after front panel is removed (cable need not be disconnected) access to the turntable and cutter head is simple.
- C. Place three (3) CD-ROMS on the turntable, and while observing cutter head, manually seat solenoid at rear of machine. With three CD's on turntable cutter head should touch the top CD-ROM. If this is not the case, adjust the cutter force adjustment nut until the cutter head touches the top CD .
- D. After adjustment, remove CD-ROMs from turntable, and re-assemble front and rear panels, being careful not to pinch wiring cables. CD-access door must be reassembled using Thread-lock (lock-tight) cement on 1/4-20 threads, and tightened firmly.

### CYCLE TIME ADJUSTMENT:

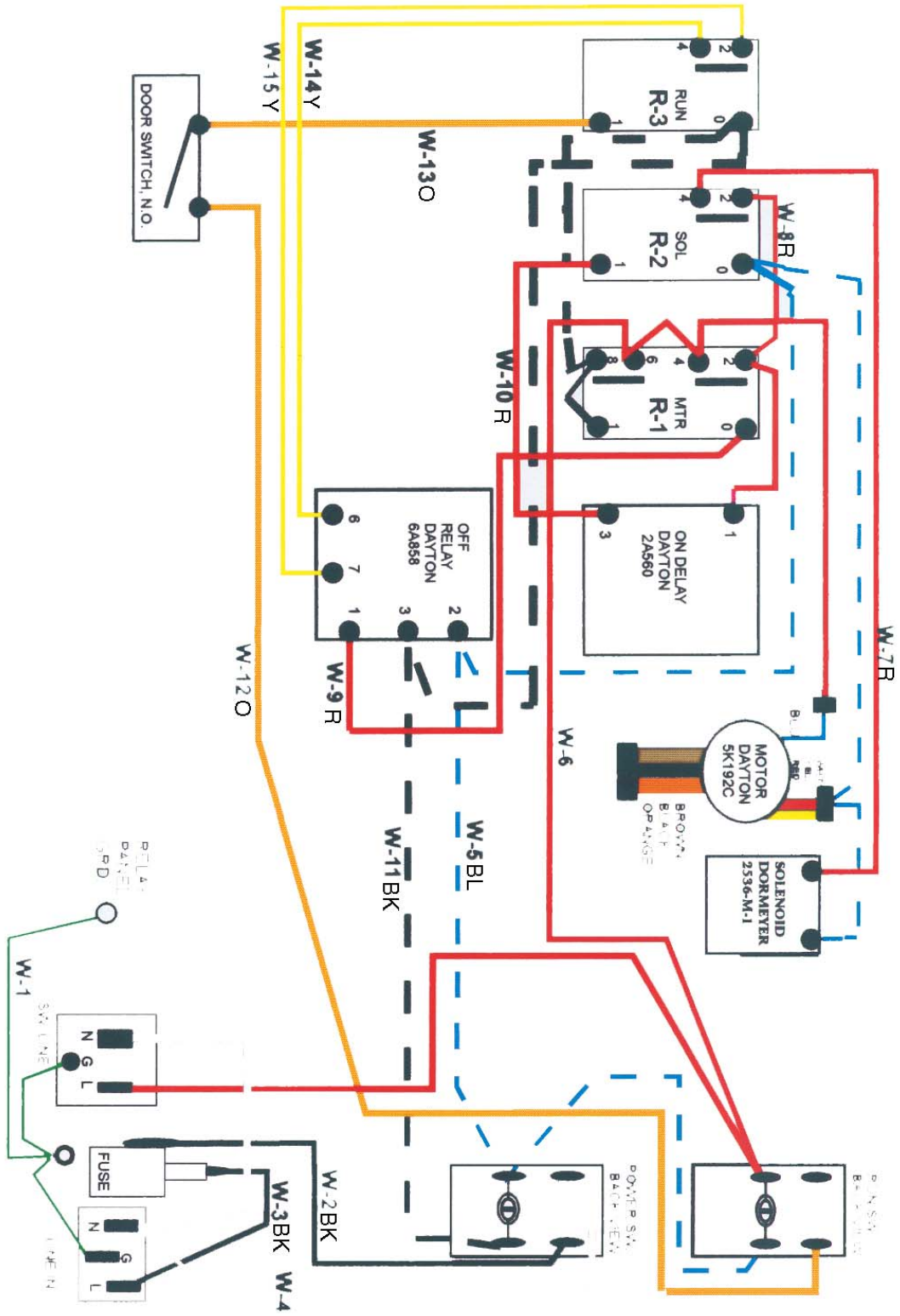
- A. REMOVE POWER CORD FROM UNIT.
- B. Locate "cycle time adjust" port on back panel. Cycle time is factory set at 12-15 seconds. If more aggressive milling is required for special situations (thicker labels, label material, etc.) Cycle time may be adjusted upward. Caution: if cycle time is set too high, CD-ROMs may melt from increased friction. Ideally, cycle time should be as short as possible, and still remove all information-bearing surface. A small blade-type screwdriver may be used to adjust the on timer. Total adjustment range is 3 to 60 seconds

# SCHEMATIC - MODEL 1200



SCHEMATIC DRAWING

# CD-1200 WIRING DIAGRAM

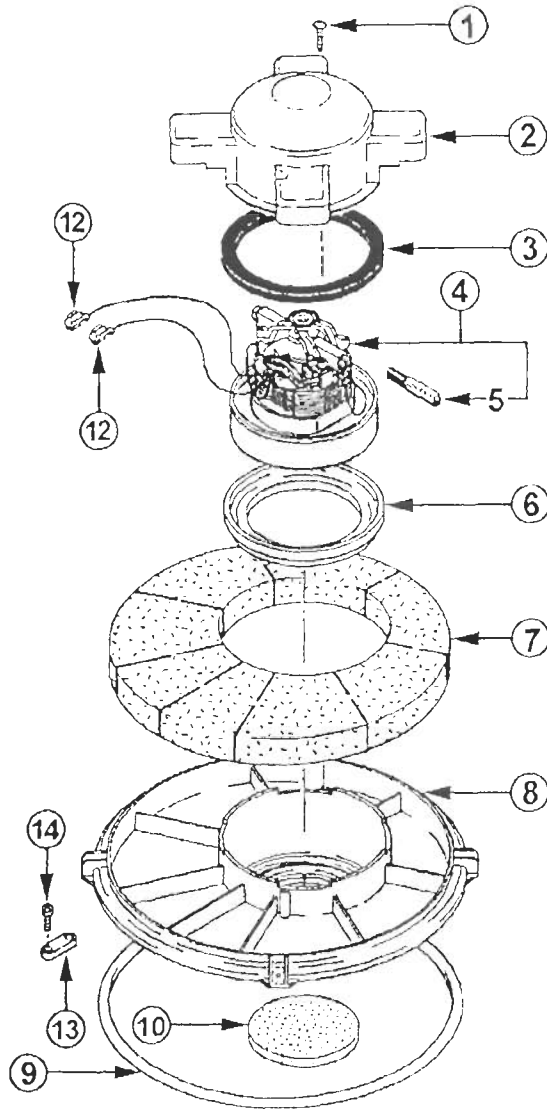


## WIRING DIAGRAM

Model 1200

# REPLACEMENT PARTS LIST

## MOTOR ASSEMBLY

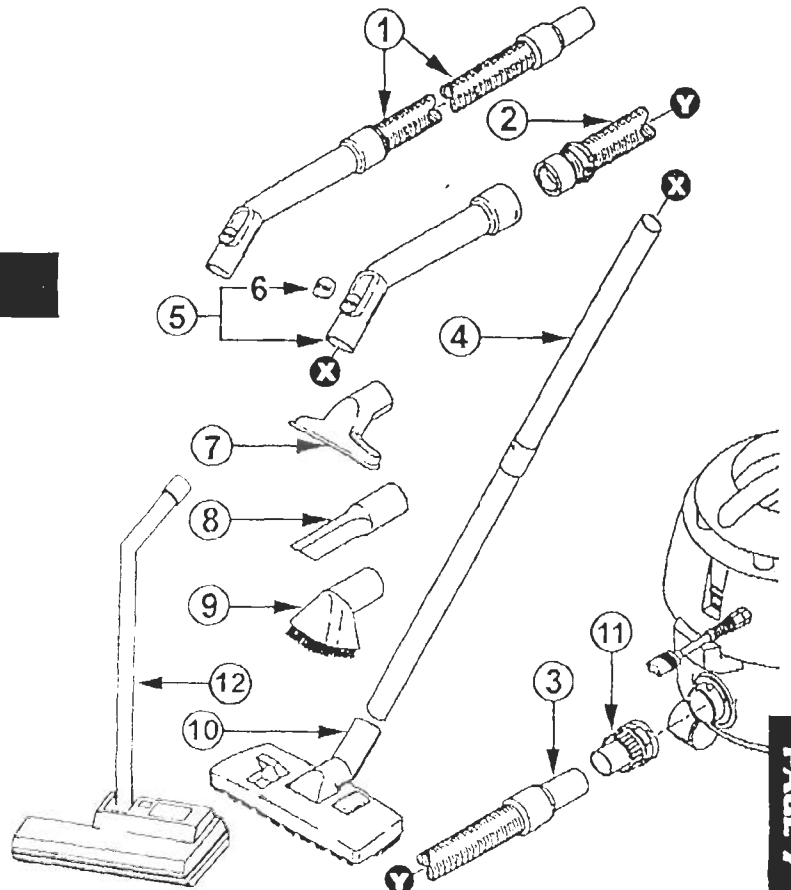


Ref No	Part Description	Part No
1	Screw, KA40 X12	418005
2	Motor Cover	418161
3	Top Motor Gasket	418188
4A	120V Vacuum Motor	373893
4B	230V Vacuum Motor	338605
5	Carbon Brush (120V Mtr - 2)	449296
6	Lower Motor Gasket	364177
7	Silencing Foam	418234
8	Cover	418242
9	Silencing Gasket	418250
10	Motor Filter	418269
12	Insulated Terminal (2)	394041
13	Cable Lock	436992
14	Cable Lock Screws (2)	437026

## HOSE, WAND & TOOLS

Ref No	Part Description	Part No
1	Hose Assembly	413216A
2	Vacuum Hose	400661
3	Hose Cuff	378038
4	Straight Wand (2 Required)	408212
5	Wand Elbow	418331
6	Slide	418358
7	Upholstery Tool	409146
8	Crevice Tool	409154
9	Brush, Dusting	409162
10	Tool, Carpet/Floor	409170
11	1 1/2" Hose Connector	349445
12	Power Nozzle*	408379
13	Air Power Brush*	408360

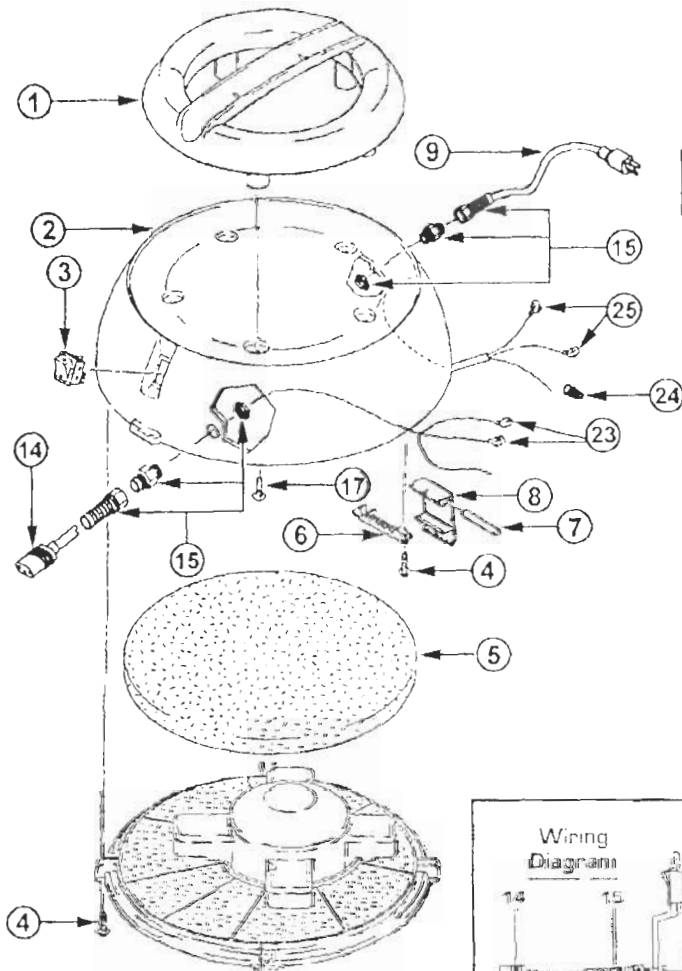
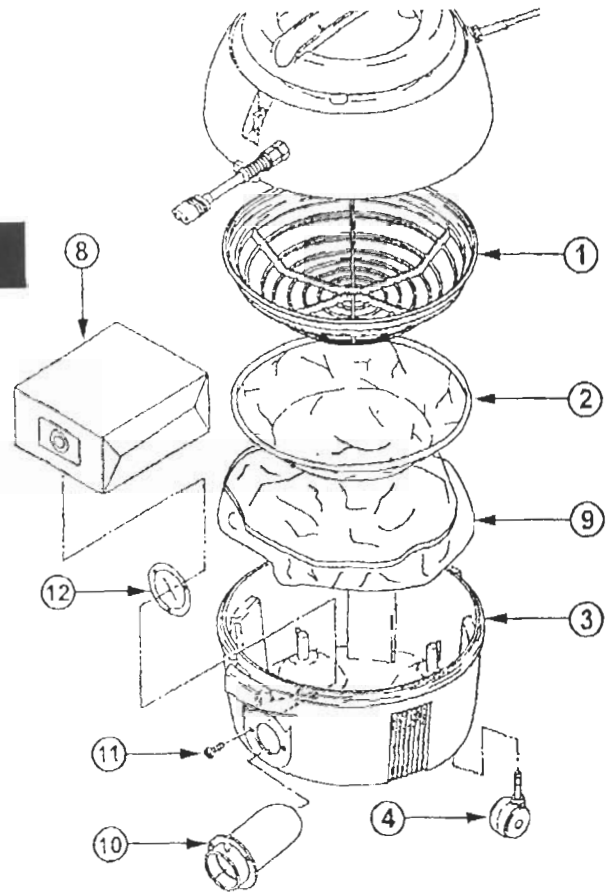
\*Optional Accessories



# REPLACEMENT PARTS LIST

## TANK ASSEMBLY & FILTERS

Ref No	Part Description	Part No
1	Filter Cage	408243
2	Cloth Filter	408251
3A	Vacuum Tank	417939
3B	Vacuum Tank Assembly	419869
4	Swivel Caster	418374
8	Paper Bag (5/Pk)	408239
9	Impact Filter (1/Pk)	408328
10	Metal Inlet Fitting w/Gasket.	325406
11	M5 X 12 MM Screw {3}	437042
12	Metal Plate	417955



## DOMES ASSEMBLY

Ref No	Part Description	Part No
1	Handle	417971
2	Dome	418366A
3	Tumbler Switch	415235
4	KA40 X 12 Screw	418005
5	Silencing Foam	418013
6	Holdown Pin	418021
7	Pin	418048
8	Latch	418056
9	30 Ft. Line Cord	318647
14	Female Pig Tail	369160
15	Strain Relief Assy	443379
17	M12 X 16MM Screw	457034
23	Piggy Back Terminal (2)	437298
24	Orange Wire Nut	398985
25	Insulated Terminal (2)	394041

